



**Seoul Office** 355, Hyoryeong-ro, Seocho-gu, Seoul, 06643, Republic of Korea  
**Headquarter** 467, Sapgypyeongya-ro, Godeok-myeon, Yesan-gun, Chungcheongnam-do, 32402, Republic of Korea

**NOX FLOR**  
by NOX Corp.

**NOX**  
**LDW<sup>+</sup>**  
LUXURY DESIGN WALL

**Stile**  
Premium S-tandard, Stylish S-olution

**NOX**  
**LDW<sup>+</sup>**  
LUXURY DESIGN WALL

**Stile**

**NOX Corp.**

NOX LDW+ LUXURY DESIGN WALL

Floor LDS-45104-01  
Wall LDS-45101-02  
LDS-45104-02



## Contents

About	04
Why Stile	10
Design Index	16
Collection	18

NOX  
**LDW+**  
LUXURY DESIGN WALL

**Stile**  
Premium S-tandard, Stylish S-olution

# Premium

## IRREPLACEABLE!

First ever, the better, luxury design tile adding premium value to a space



**Solid, more durable!**

Unmatched durability with scratch & dent resistance



**Soft, more comfortable!**

Soft underfoot comfort with NOX EMT™ Technology



**Stylish, more natural!**

The world's largest collections of global designs solution



**Safe, more hygienic!**

Ultimate hygiene solution with NOX EPT™ Technology

## Stile

NOX's Stile is a hybrid interior tile utilizing the world's leading LVT company NOX's innovative technology to optimize the advantages of ceramic tiles while compensating for their disadvantages.

Stile's outstanding quality, durability, and realistic design solution present a new standard for the premium space.

# INNOVATIVE!

Easier, stronger installation with  
**the world's first  
diagonal-cutting edge technology**



**Save** cost and time



**Stronger** joint, stronger floor



**Lighter** weight, simpler installation

## Technology

### NEE SYSTEM NOX EASY EDGE SYSTEM

NOX's Stile incorporates the 'NOX Easy Edge System', providing the easiest and fastest installation with the world's first diagonal-cutting edge technology. This unique edge technology grants extra stability and durability to the joint, offering a soft foot feel and a seamless surface.

Experience the next level interior tile with easier, faster installation and stronger joint



# SUSTAINABILITY STANDARD!

The world's first and most sustainable interior tile



**Sustainable** interior tile with carbon reducing raw materials



minimal resource-requiring high-quality interior tile with energy-minimizing production



100% easily recyclable interior tile



## Sustainable

### Stile, the world first interior tile made with sustainable material

NOX Stile is the world's first to use 90% of its raw materials with sustainable raw materials, produced using discarded resources such as waste cooking oil and recycled PET bottles, to contribute to carbon reduction. These materials have earned ISCC PLUS certification, the world's most prestigious sustainability certification. NOX redefines the sustainability standard of flooring



# Save

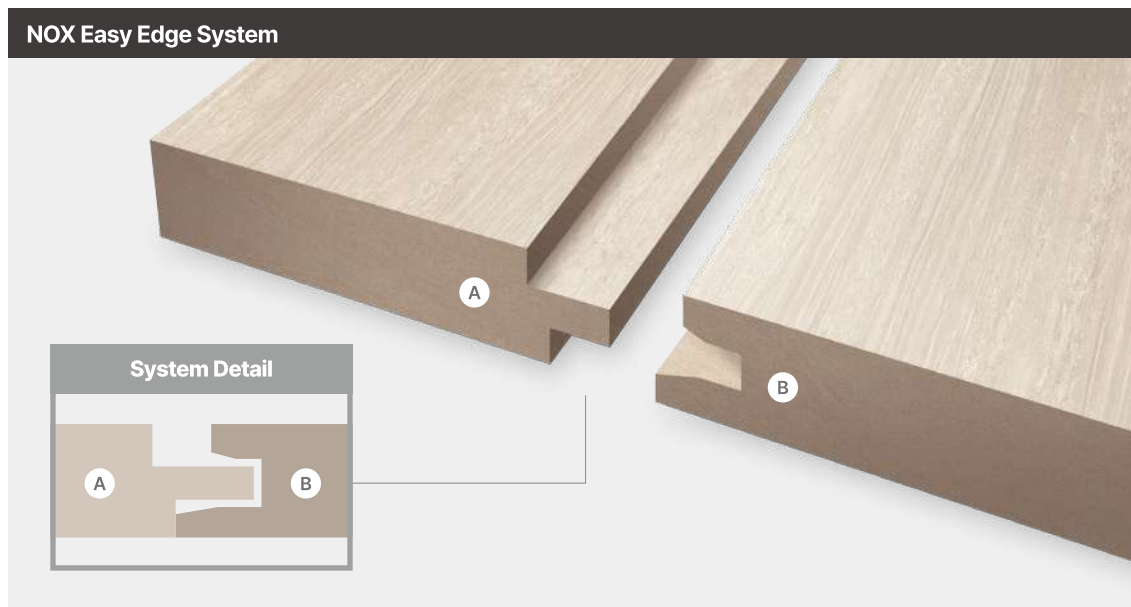
## 01 - Easier and Faster Installation!



Easier, faster installation with stronger joinery methods  
**NOX Easy Edge System**

### NEE SYSTEM NOX EASY EDGE SYSTEM

The world's first diagonal-cutting-edge technology providing the easiest and fastest installation. Experience the NOX Easy Edge system applied next level interior tile, presenting easier, faster installation and a stronger joint



#### 01 Faster installation!

Easy installation method reduce flooring installation time to within 24hr\*  
\*can vary depending on installation environment & conditions



#### 02 Easier installation!

Lightweight of the tile, than ceramic tile, eases workload and reduces damage risk during preparation and installation



# Solid

## 02 - More Durable with scratch and dent resistance!



More durable NOX Stile  
**EMT™ Core, multi-layered technology & EPT™ Shield, high performing premium coating technology**

NOX technologies prevent impact damage and scratches, making it safe for family usage. In addition, high resistance to discoloration and contamination eases management, while strong durability preserves high quality for a longer time.

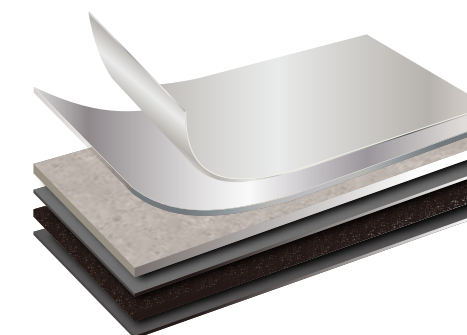
### EMT™ Core & EPT™ Shield



EPT™ Shield



EMT™ Core



#### 01 Damage Resistant!

Lower risk of cracking or breaking than ceramic or natural tiles that could lead to injury

\*Tested with modified EU certified EN 13329:2006+A1:2008 test methods



#### 02 Scratch Resistant!

Classified with Class 4\*, withstanding heavy traffic from commercial area such as hotels and department stores. Strong for outer impact or pet scratches

\*Test result for Surface Abrasion (ASTM-C1027)



# Safe

## 03 - Safer and More Hygienic Maintenance!



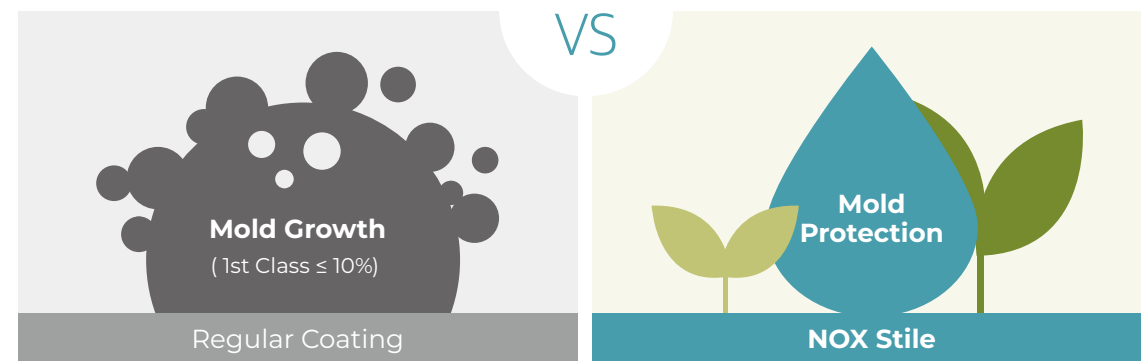
Enhance hygiene in the bathroom with **NOX coating technology**

01

### Safer and more Hygienic, **EPT™ Shield coating technology**

EPT™ Shield technology not only creates premium matte texture, but it also features discoloration and contamination resistance that ease cleaning and maintenance and an anti-mold coating for more hygienic environments. The safety of the antibacterial materials used for EPT™ Shield technology has been approved by the US EPA

\* US EPA : US Environmental Protection Agency



02

### Phthalate-free! Heavy metal-free! Pollution-free!

Zero-heavy metals contain reliable interior tile with eco-friendly certification. Also safe and sustainable with carbon-reducing raw material usage.



# Soft

## 04 - More Enhanced Comfort and Resilience!

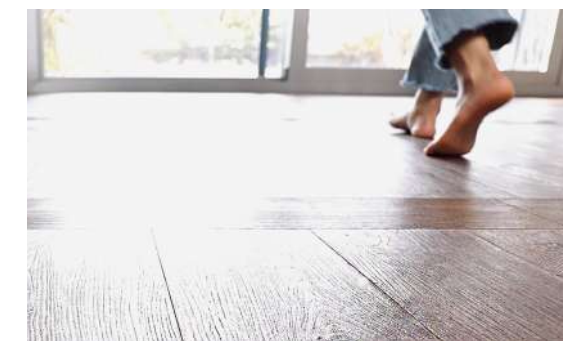


Flooring solutions designed for your family: **enhanced safety and reliability**

01

### No.1 acoustic performance, better than ceramic tile

The NOX multi-layer technology reduces the noise level by absorbing the physical impact sound. In addition, the temperature of the flooring's surface remains constant, creating a comfortable environment for barefoot walking in the winter or summer.



02

### Healthy choice for all family member

Interior tile, comfortable to walk for kids to the elderly



Stile's resilience offers a softer, more comfortable walking experience than the hard and solid ceramic tile

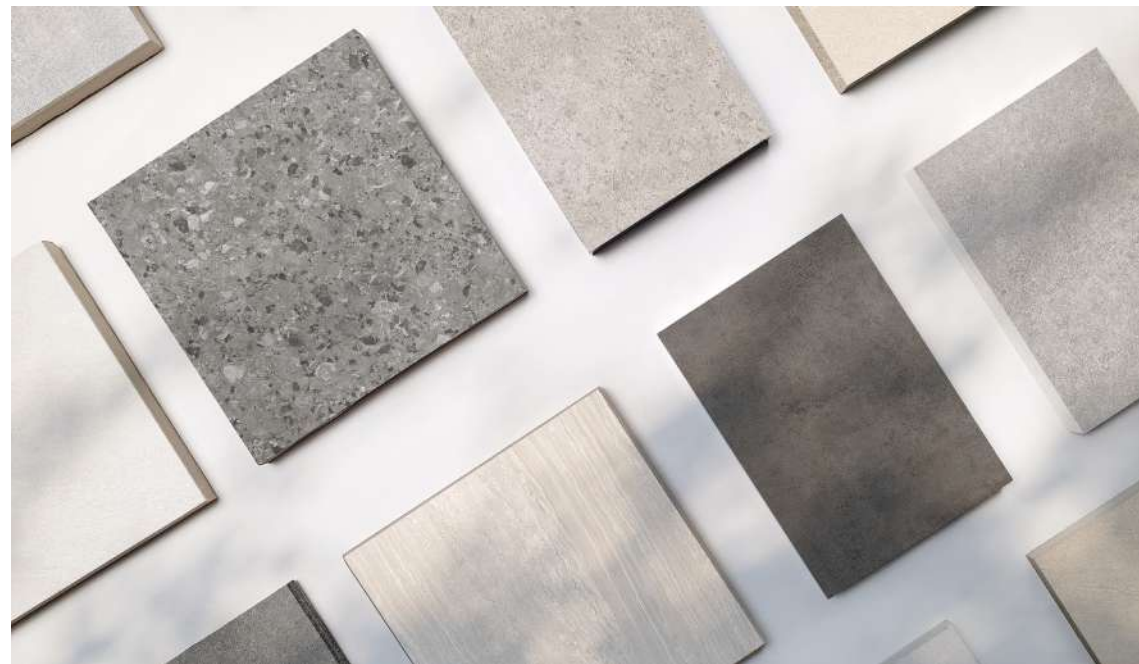
KS M3802 test	Ceramic Tile	NOX Stile
<b>KS M3802 test</b> More than 0.25mm(23°C)	No resiliency	<b>More than 0.25mm(23°C)</b>
<b>Test for recovery from indentation</b> Less than 8% (KC certified)	Not applicable	<b>Excellent recovery</b>

# Stylish

## 05 - More Realistic and Stylish Design!



Leading trendy design:  
**NOX's exclusive curation of premium spaces**



### 01 **More Classic!**

NOX's in-house design team presents a carefully selected curation of classic designs that fit into any space. A detailed portrayal of the stone and wood's unique features will upgrade the existing space with freshness



### 02 **More Realistic!**

NOX have the world's leading, largest in-house design solution with over 6,000 designs that have won world-renowned awards. More realistic texture created with proven global design experience offers a premium space.





# Pattern Index

FLOOR

SIZE 590×590mm×4.5T  
PACKAGE 8pcs/Box (2.78m<sup>2</sup>)

WALL

SIZE 590×1,180mm×4.5T  
PACKAGE 4pcs/Box (2.78m<sup>2</sup>)

## Travertine



**New** Trani Ivory

FLOOR LDS-45101-01 WALL LDS-45101-02

## Limestone



**New** Lagos Grey

FLOOR LDS-45201-01 WALL LDS-45201-02

## Ceppo di gre



**New** Mundo Deep

FLOOR LDS-45301-01 WALL LDS-45301-02

## Sand Stone



**New** Dover White

FLOOR LDS-45102-01  
WALL LDS-45102-02



**New** Dover Ivory

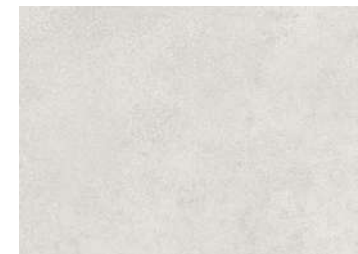
FLOOR LDS-45103-01  
WALL LDS-45103-02



**New** Dover Beige

FLOOR LDS-45104-01  
WALL LDS-45104-02

## Concrete



**New** Baston White

FLOOR LDS-45202-01  
WALL LDS-45202-02



**New** Baston Grey

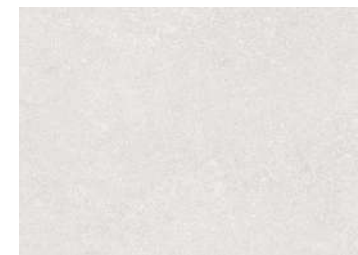
FLOOR LDS-45203-01  
WALL LDS-45203-02



**New** Baston Deep Dark

FLOOR LDS-45204-01  
WALL LDS-45204-02

## Natural Stone



**New** Fino White

FLOOR LDS-45302-01  
WALL LDS-45302-02



**New** Fino Grey

FLOOR LDS-45303-01  
WALL LDS-45303-02



**New** Fino Deep Grey

FLOOR LDS-45304-01  
WALL LDS-45304-02

Catalog images are indicative of the quality and style of the product specification but may not represent the actual details.



NOX LDW+ LUXURY DESIGN WALL

# Travertine



New Trani Ivory

FLOOR LDS-45101-01 WALL LDS-45101-02

FLOOR | SIZE 590x590mmx4.5T  
PACKAGE 8pcs/Box (2.78m<sup>2</sup>)

WALL | SIZE 590x1,180mmx4.5T  
PACKAGE 4pcs/Box (2.78m<sup>2</sup>)

Catalog images are indicative of the quality and style of the product specification but may not represent the actual details.



FLOOR LDS-45104-01 WALL LDS-45104-02

NOX LDW+ LUXURY DESIGN WALL

# Sand Stone



New Dover White FLOOR LDS-45102-01 WALL LDS-45102-02



New Dover Ivory FLOOR LDS-45103-01 WALL LDS-45103-02



New Dover Beige FLOOR LDS-45104-01 WALL LDS-45104-02

FLOOR | SIZE 590x590mmx4.5T  
PACKAGE 8pcs/Box (2.78m<sup>2</sup>)

WALL | SIZE 590x1,180mmx4.5T  
PACKAGE 4pcs/Box (2.78m<sup>2</sup>)

Catalog images are indicative of the quality and style of the product specification but may not represent the actual details.



NOX LDW+ LUXURY DESIGN WALL

# Limestone



**New** Lagos Grey

FLOOR **LDS-45201-01** WALL **LDS-45201-02**

Catalog images are indicative of the quality and style of the product specification but may not represent the actual details.



**Floor** LDS-45202-01 **Wall** LDS-45202-02

NOX LDW+ LUXURY DESIGN WALL

# Concrete



**New** Baston White **FLOOR** LDS-45202-01 **WALL** LDS-45202-02



**New** Baston Grey **FLOOR** LDS-45203-01 **WALL** LDS-45203-02



**New** Baston Deep Dark **FLOOR** LDS-45204-01 **WALL** LDS-45204-02

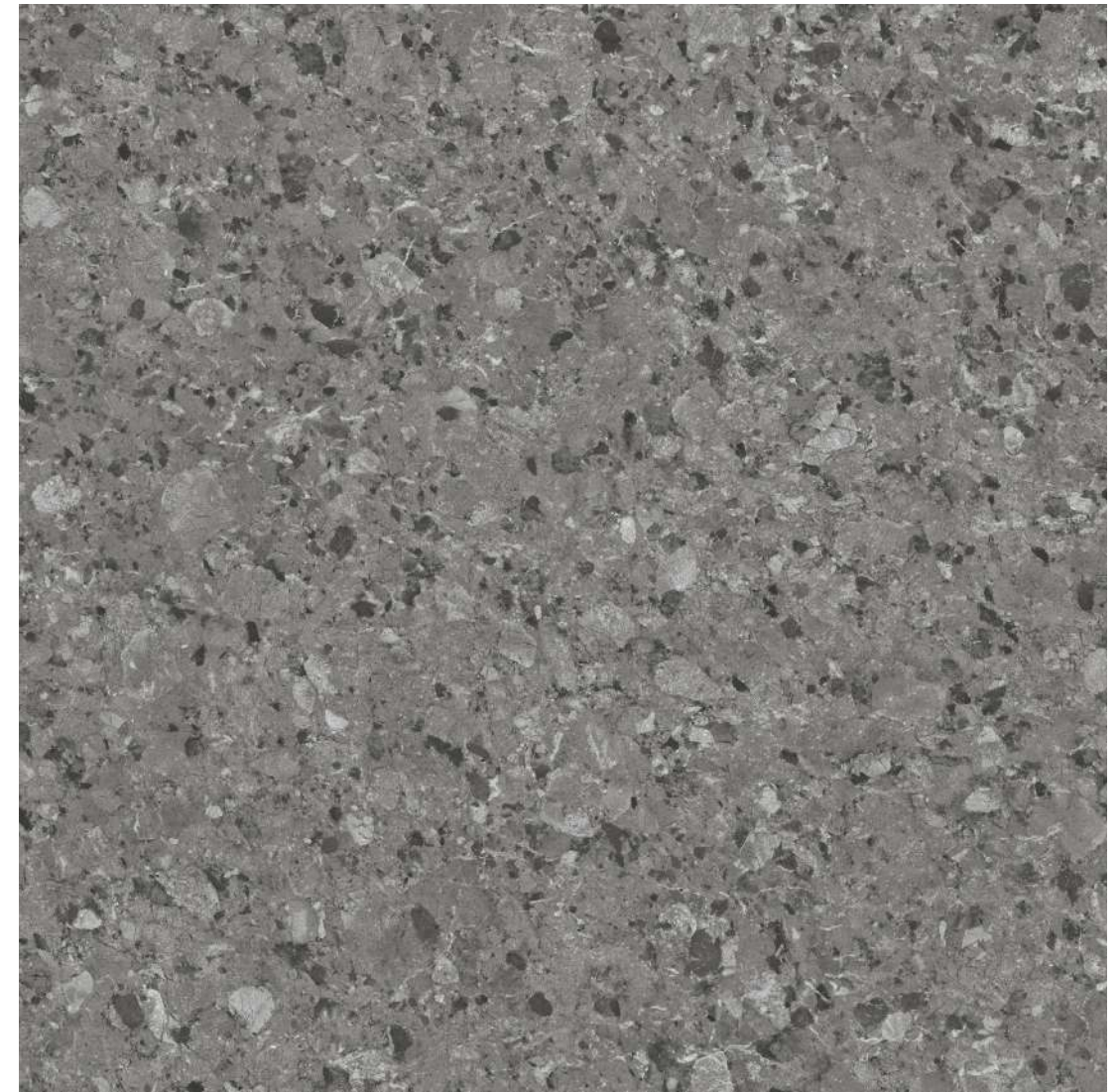
**FLOOR** | **SIZE** 590x590mmx4.5T  
**PACKAGE** 8pcs/Box (2.78m<sup>2</sup>)

**WALL** | **SIZE** 590x1,180mmx4.5T  
**PACKAGE** 4pcs/Box (2.78m<sup>2</sup>)

Catalog images are indicative of the quality and style of the product specification but may not represent the actual details.

NOX LDW+ LUXURY DESIGN WALL

# Ceppo di gre



**New** Mundo Deep

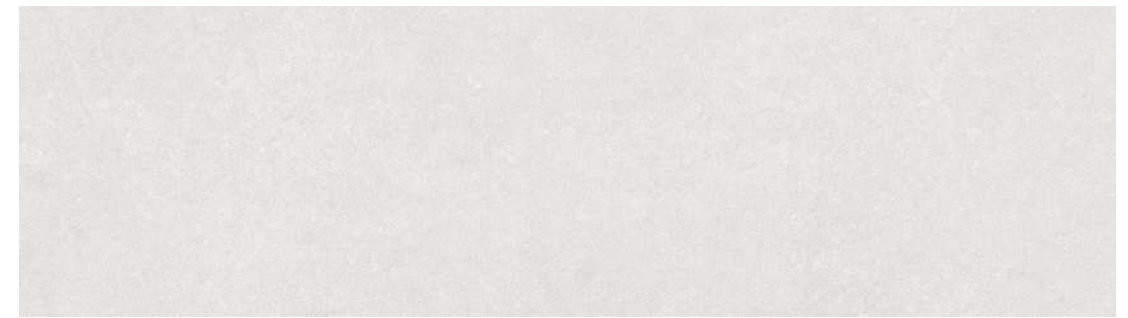
FLOOR **LDS-45301-01** WALL **LDS-45301-02**

Catalog images are indicative of the quality and style of the product specification but may not represent the actual details.



NOX LDW+ LUXURY DESIGN WALL

## Natural Stone



**New** Fino White

FLOOR **LDS-45302-01** WALL **LDS-45302-02**



**New** Fino Grey

FLOOR **LDS-45303-01** WALL **LDS-45303-02**



**New** Fino Deep Grey

FLOOR **LDS-45304-01** WALL **LDS-45304-02**

NOX

LDW<sup>+</sup>

LUXURY DESIGN WALL

---

Stile

Premium S-tandard,  
Stylish S-olution



NOX

LDW<sup>+</sup>

LUXURY DESIGN WALL

---

stile

Premium S-tandard,  
Stylish S-olution

NOX

LDW<sup>+</sup>

LUXURY DESIGN WALL

---

Stile

Premium S-standard

NOX

LDW<sup>+</sup>

LUXURY DESIGN WALL

---

Stile

Premium S-tandard, Stylish S-olution

**S**tile

Premium S-tandard, Stylish S-olution